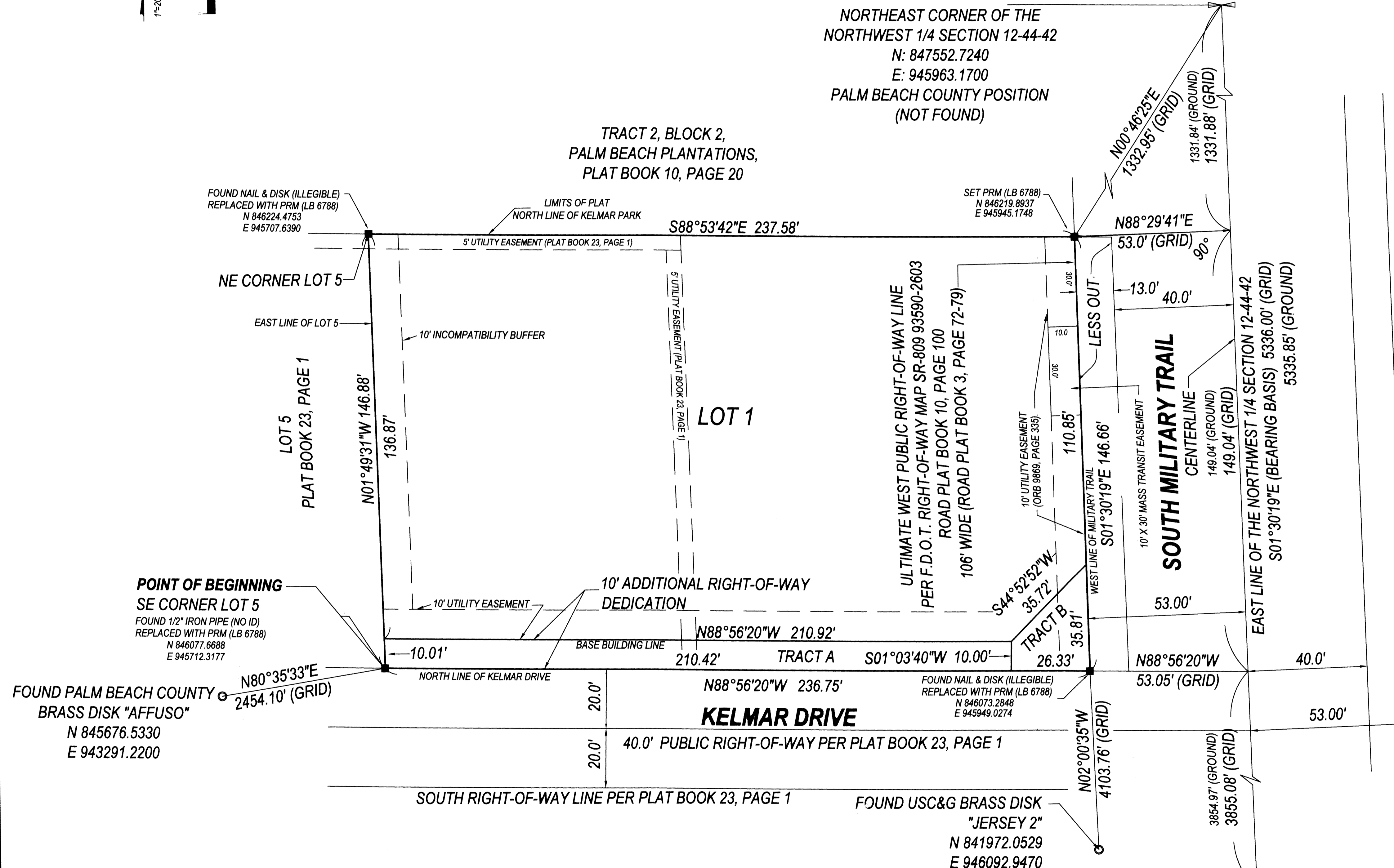
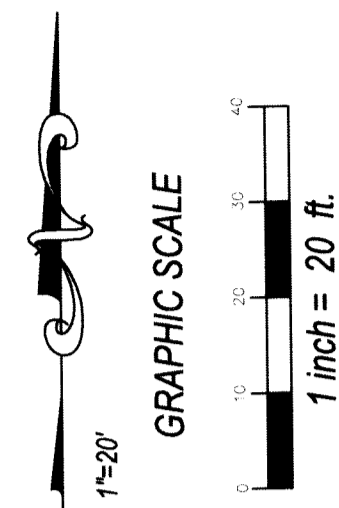


162

KELMAR CENTER

BEING A REPLAT OF LOTS 1, 2, 3 AND 4, KELMAR PARK, LESS EAST 13 FEET THEREOF,
 AS RECORDED IN PLAT BOOK 23, PAGE 1 OF THE PUBLIC RECORDS OF
 PALM BEACH COUNTY, FLORIDA.
 SECTION 12, TOWNSHIP 44 SOUTH, RANGE 42 EAST, PALM BEACH COUNTY, FLORIDA
 SHEET 2 OF 2



* ABBREVIATIONS:
 PSM = FLORIDA LICENSED SURVEYOR & MAPPER
 LB = LICENSED BUSINESS
 PB = PLAT BOOK
 ORB = OFFICIAL RECORD BOOK
 PG = PAGE
 SQ. FT. = SQUARE FEET
 PRM = PERMANENT REFERENCE MONUMENT
 LS = LICENSED SURVEYOR
 USC&G = UNITED STATES COAST AND GEODETIC
 ID = IDENTIFICATION
 N = NORTHING
 E = EASTING
 FDOT = FLORIDA DEPARTMENT OF TRANSPORTATION
 S.R. = STATE ROAD

- LEGEND**
- SET 4"x 4" CONCRETE MONUMENT AND BRASS DISK "LB 6788"
 - SET 1/2" IRON ROD AND CAP "LB 6788"
 - FOUND 4"x 4" CONCRETE MONUMENT (PERMANENT REFERENCE MONUMENT)
 - FOUND NAIL AND DISK

NOTE ON COORDINATES, BEARINGS AND DISTANCES:
 COORDINATES SHOWN ARE GRID. DATUM IS NAD 83, 1990 ADJUSTMENT. ZONE IS FLORIDA EAST.
 LINEAR FOOT IS US SURVEY FOOT. COORDINATE SYSTEM IS 1983 STATE PLANE TRANSVERSE
 MERCATOR PROJECTION. ALL DISTANCES ARE GROUND (UNLESS OTHERWISE NOTED).
 SCALE FACTOR IS 1.000027973 (GROUND DISTANCE TIMES SCALE FACTOR IS GRID DISTANCE).
 BEARINGS SHOWN ARE GRID DATUM, NAD 83, 1990 ADJUSTMENT, FLORIDA EAST ZONE.

PRINCIPAL MERIDIAN SURVEYING INC.
 4546 CAMBRIDGE STREET
 WEST PALM BEACH, FL 33415
 PHONE 833.478.7764 / FAX 561.478.1094
 WWW.PMSURVEYING.NET
 JOB # 14080735